

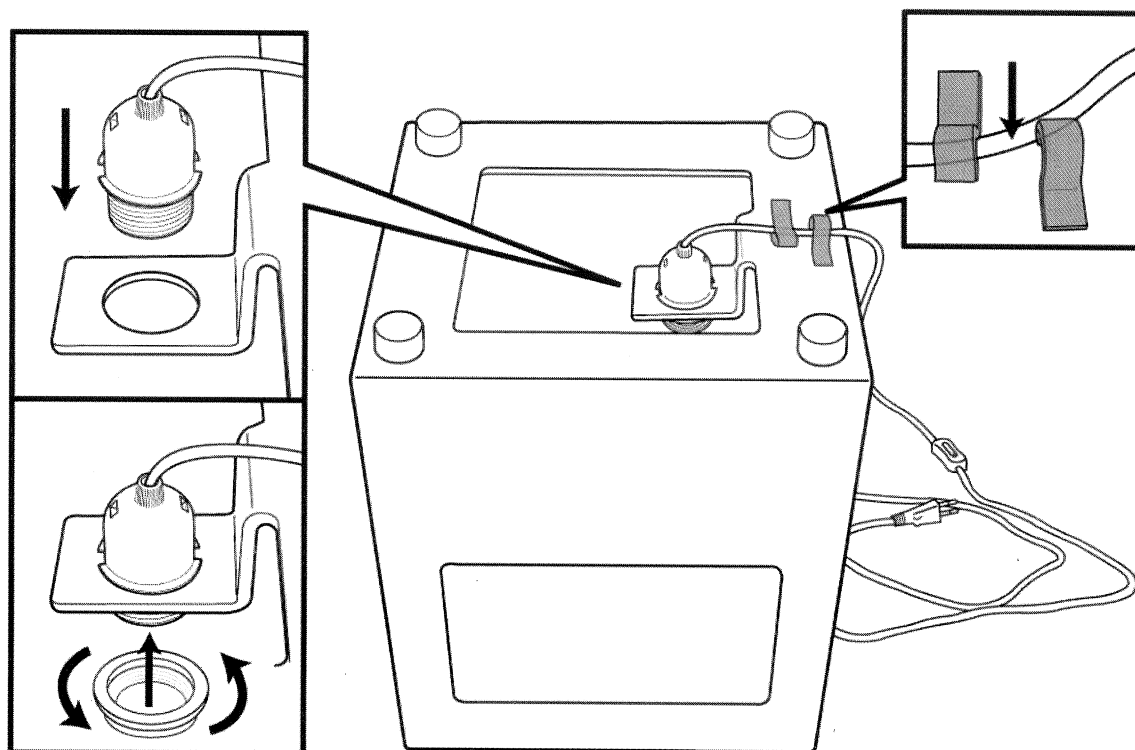
ASSEMBLY INSTRUCTION

NO.727 / 728

Caution :

1. If the external flexible cable or cord of this luminaire is damaged, it shall be exclusively replaced by the manufacturer or its service agent or a similar qualified person in order to avoid a hazard.
2. NEED TO USE ENERGY SAVING BULB ONLY

1



2

