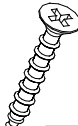


ACCESSORIES



E



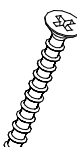
E1



A



K



E2



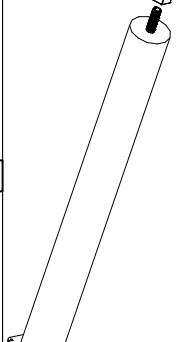
B



B



B



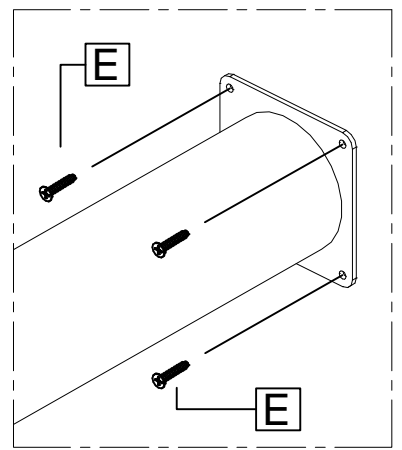
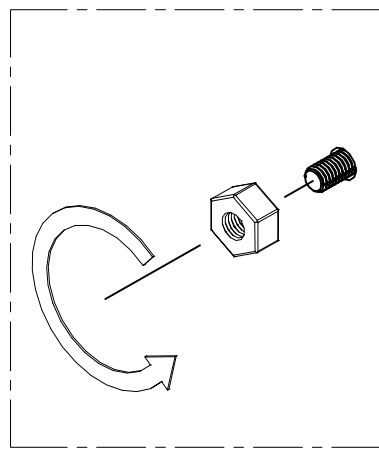
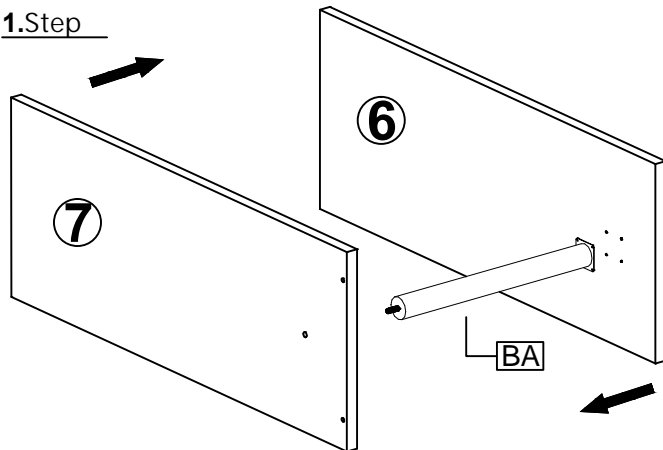
BA

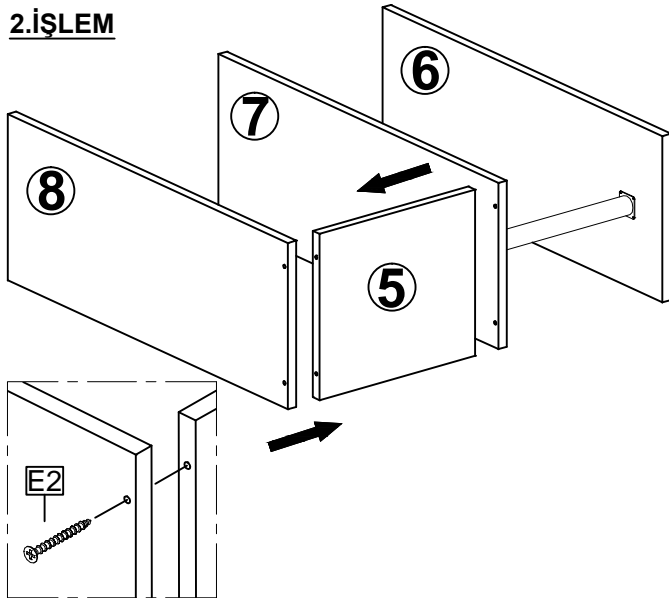
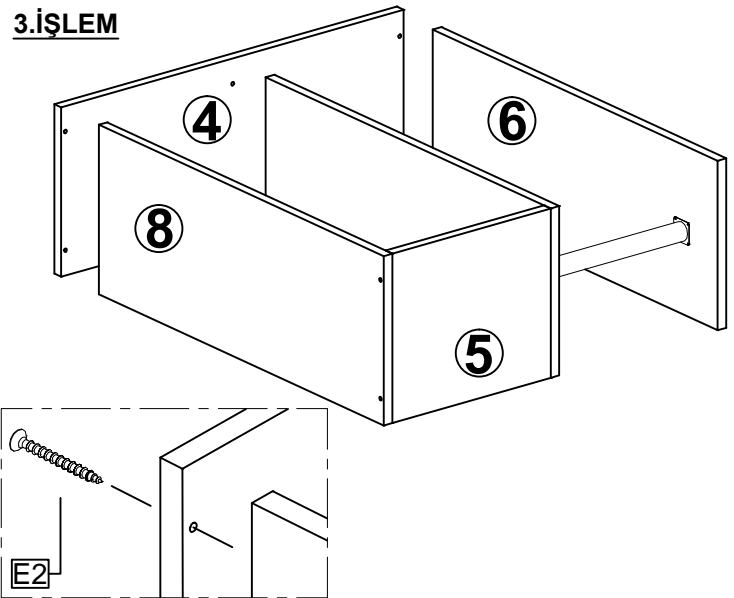
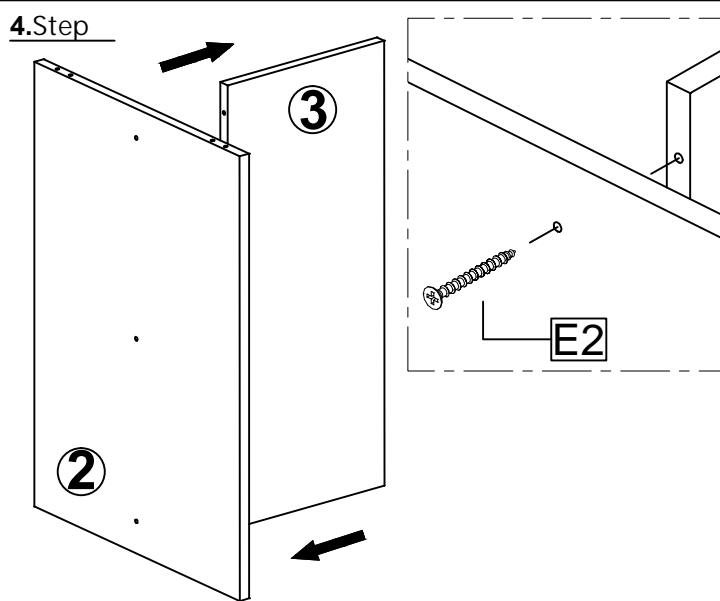
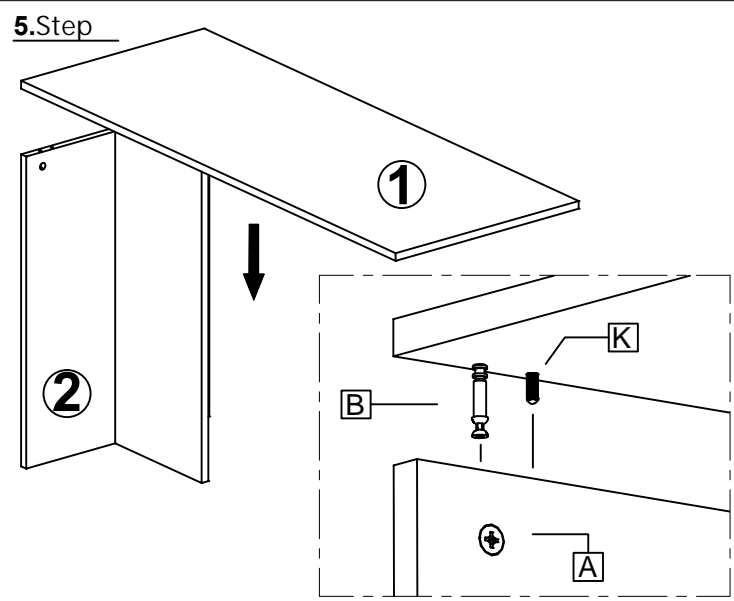
NO	PARÇA ADI	KLNLK	BOY	EN	AD.
1	Masa Tabla	18	1300	500	1
2	Masa Ayak	18	720	500	1
3	Masa Ayak Ek	18	720	298	1
4	Etejer Yan Uzun	18	720	240	1
5	Etejer yan Kısa	18	373	240	1
6	Etejer Üst Tabla	18	782	240	1
7	Etejer Orta Tabla	18	782	240	1
8	Etejer Alt Tabla	18	782	240	1

Dear Customer

The product to bought was subjected the all sorts of test and control before sending out to you. Even in this situation, sometimes happen that some component is damaged durin the transportation. In such please do not send the whole article back us. Just request order the damaged part. While requesting the required part, describe it exactly by looking the service card. Missing part will be send you as soon as possible. Before stard assembling, please check the whole components and accesories according to the lists. After being sure that every part and accessory are okey and right, start assembling. Before start assembling, please clean all the components with a damp cloth. If you bought more than product, to prevent confusion be sure that you completed the rst product. Then start the other product's assembling. Never drag the products. While carrying, disassociate and lift the product and cary with minimum 2 people. For long distances carry the product with the package.

1. Step



2.İŞLEM**3.İŞLEM****4.Step****5.Step****6.Step**