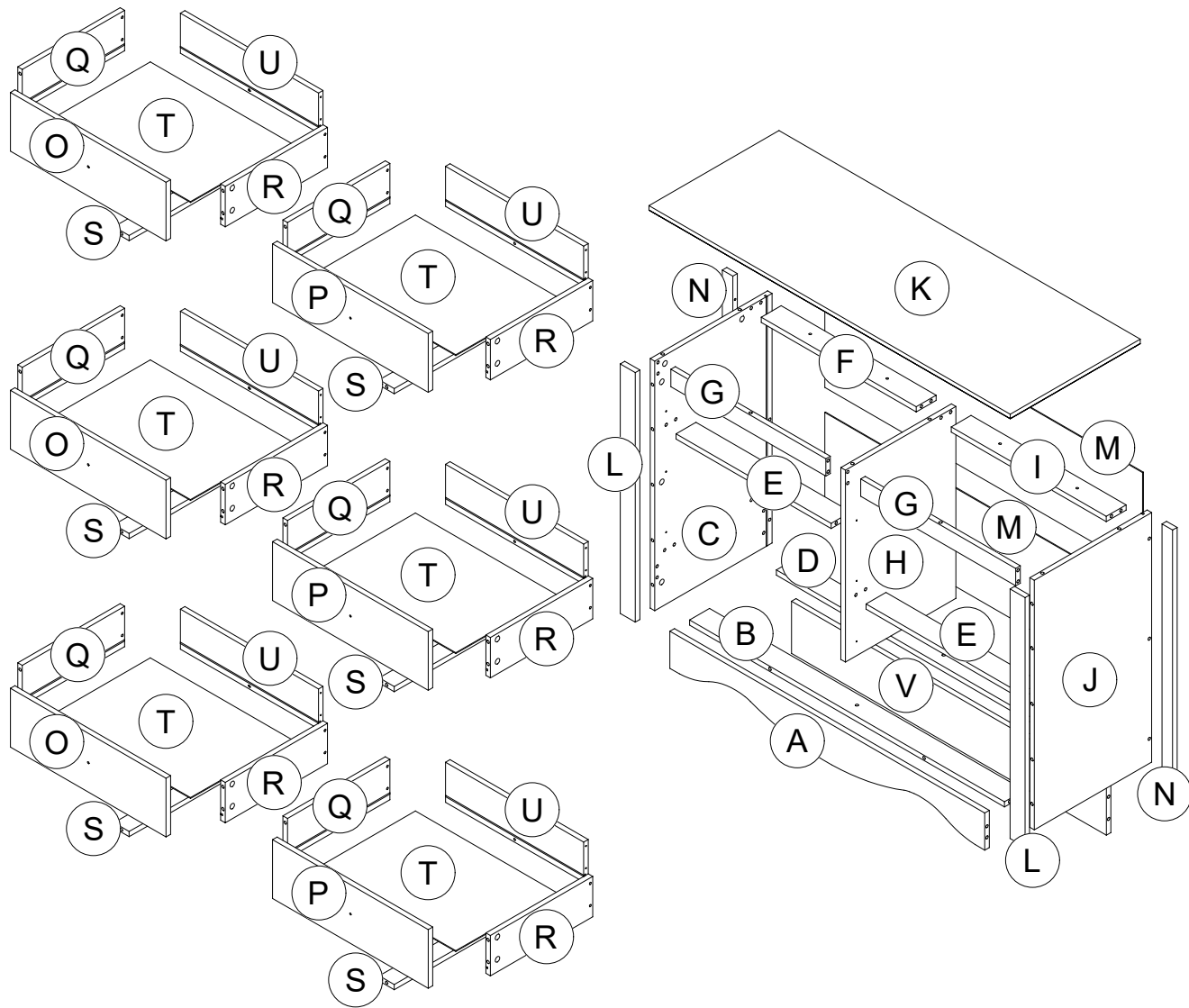


PART LIST

CODE	QTY
A	1
B	1
C	1
D	1
E	2
F	1
G	2
H	1
I	1
J	1
K	1
L	2
M	2
N	2
O	3
P	3
Q	6
R	6
S	6
T	6
U	6
V	1



ASSEMBLY INSTRUCTIONS

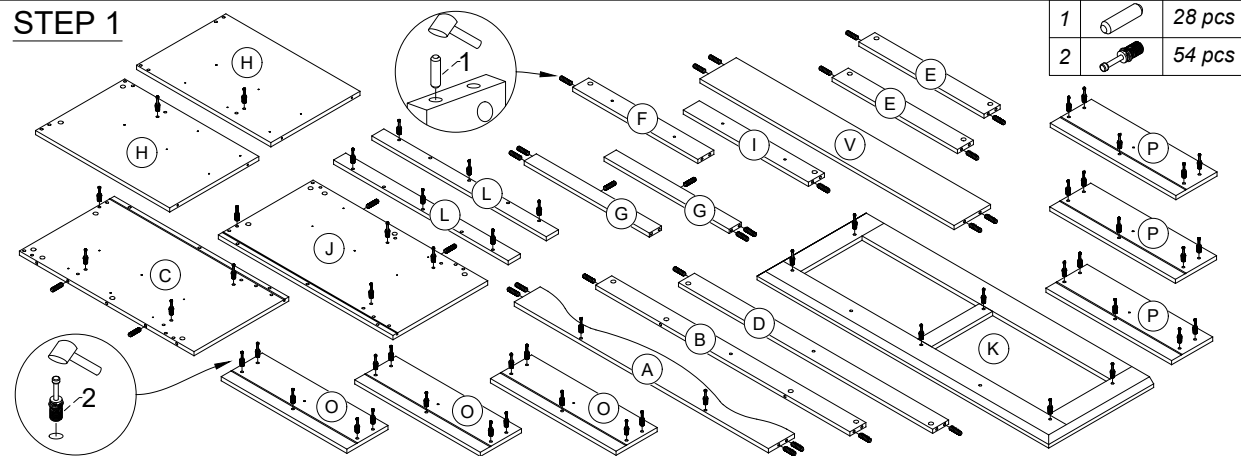
DO NOT FULLY TIGHTEN ANY BOLTS BEFORE ALL PARTS ARE LOOSELY ASSEMBLED. THE PRODUCT/FITTINGS MAY BE DAMAGED IF OVERTIGHTENED. BEWARE OF CROSS THREADING SCREWS AND BOLTS DURINGS ASSEMBLY. SMALL COMPONENT PARTS COULD CHOKE A CHILD IF SWALLOWED. WE STRONGLY RECOMMEND THAT YOU KEEP CHILDREN AWAY FROM THE WORK AREA.

PC-BD 1044-COD 6

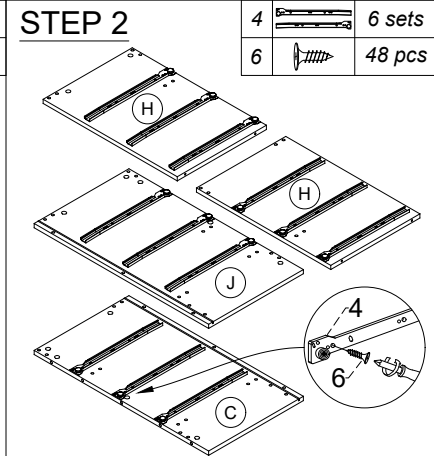
HARDWARE LIST

1		Wood Dowel $\phi 8 \times 30 \text{mm}$	28 pcs
2		Minifix Bolt	54 pcs
3		Minifix Cam	54 pcs
4		Drawer Slide 14"	6 sets
5		Drawer Slide 14"	6 sets
6		Screw $\phi 3.5 \times 12 \text{mm}$	48 pcs
7		Screw $\phi 4 \times 30 \text{mm}$	4 pcs
8		PVH - 1044mm	1 pc
9		Nail	18 pcs
10		PVC Nail With Pin	5 pcs
11		Screw $\phi 6 \times 45 \text{mm}$	8 pcs
12		Allen Key M4	1 pc
13		192 Stub	4 pcs
14		Screw $\phi 3.5 \times 25 \text{mm}$	4 pcs
15		Screw $\phi 4 \times 38 \text{mm}$	30 pcs
16		Screw $\phi 3.5 \times 16 \text{mm}$	36 pcs
17		Wooden Handle	6 pcs
18		Handle Screw $\phi 4 \times 25 \text{mm}$	6 pcs
19		Minifix Cover Cap	24 pcs
20		Wood Dowel $\phi 8 \times 50 \text{mm}$	4 pcs

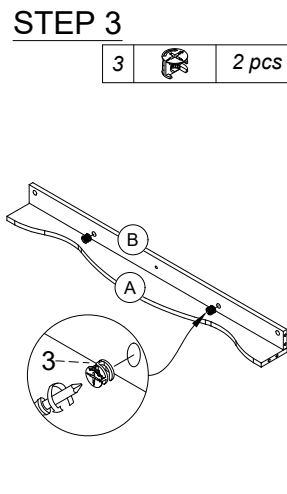
STEP 1



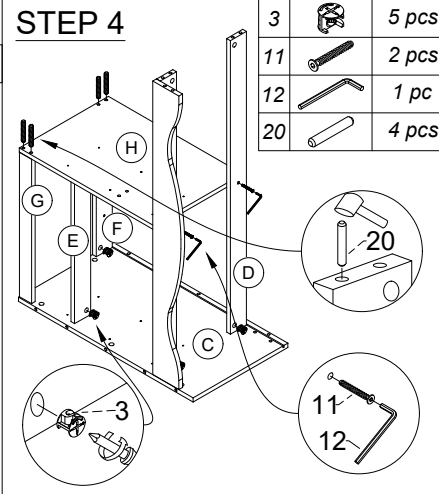
STEP 2



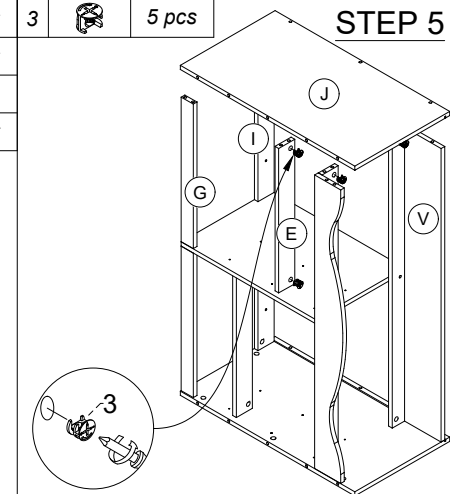
STEP 3



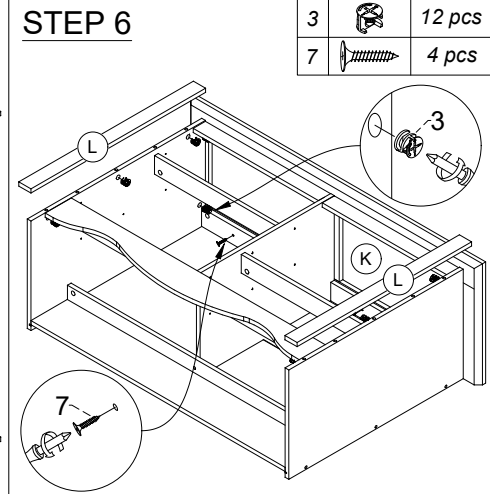
STEP 4



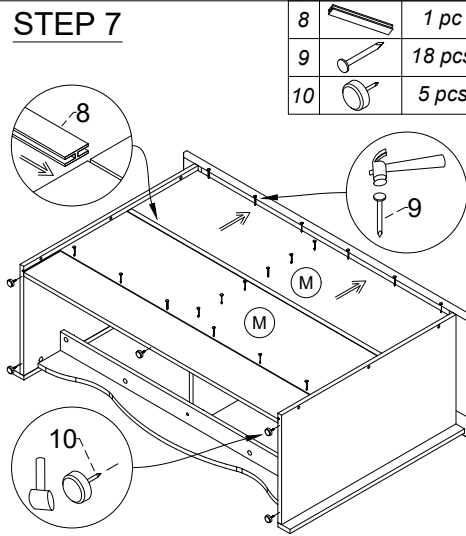
STEP 5



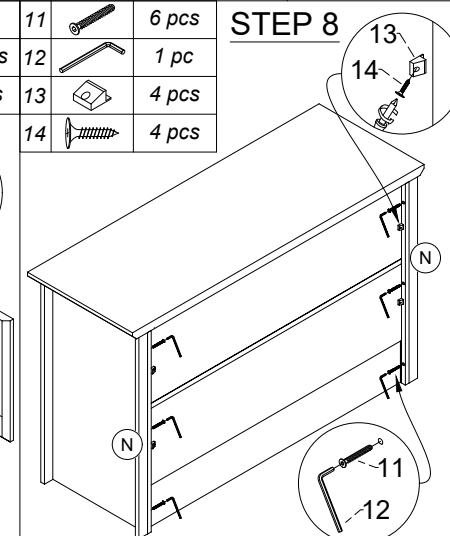
STEP 6



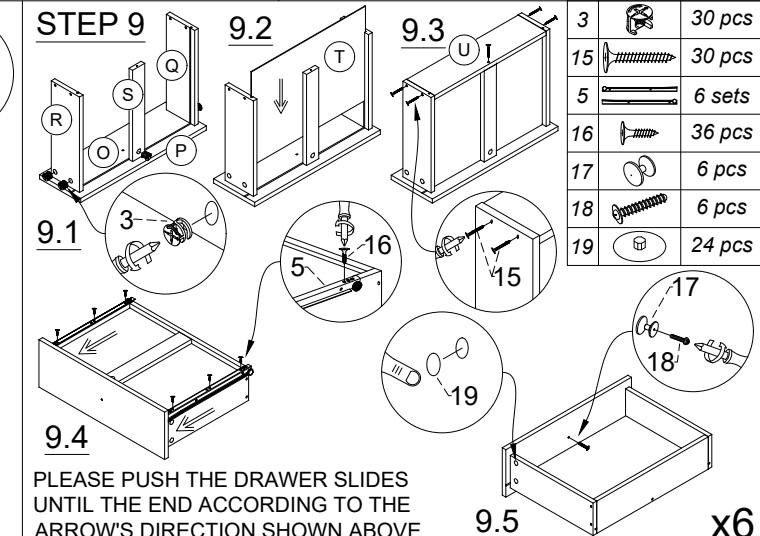
STEP 7



STEP 8



STEP 9



Important Note :
Please choose the correct screw hole before fitting the drawer runner.

Minifix Setup :

